



Supplementary Material

Age-Related Changes in the Gut Microbiota Composition of Hog Deer (*Axis porcinus*)

Hui-juan Yan¹, Wei Wang^{2,*}, Jian-qiu Yu¹, Jun Yi², Li-li Niu¹, Hong-wei Chen¹, Yu Qu¹, Yang Pu¹, Ang Chen¹, Yan Zhong¹, Wei-gang Chen¹ and Xing-ming Yu¹

¹Chengdu Zoo, Chengdu, Sichuan, P.R. China

²Animal Breeding and Genetics Key Laboratory of Sichuan Province, Sichuan Animal Science Academy, Chengdu, Sichuan, P.R. China

Supplementary Table SI.- Diet composition (dry-basis).

Infant		Sub-adult and adult	
Ingredients	g/kg	Ingredients	g/kg
Green rye	563.4	Alfalfa pellet	180
Alfalfa pellet	140.8	Alfalfa bale	120
Apple	28.2	Apple	40
Carrot	28.2	Carrot	40
Sophorae leaves	56.3	Asparagus lettuce	40
Complete Concentrate	183.1	Green grass	400
		Complete concentrate	180

Supplementary Table SII.- Sampling collection information.

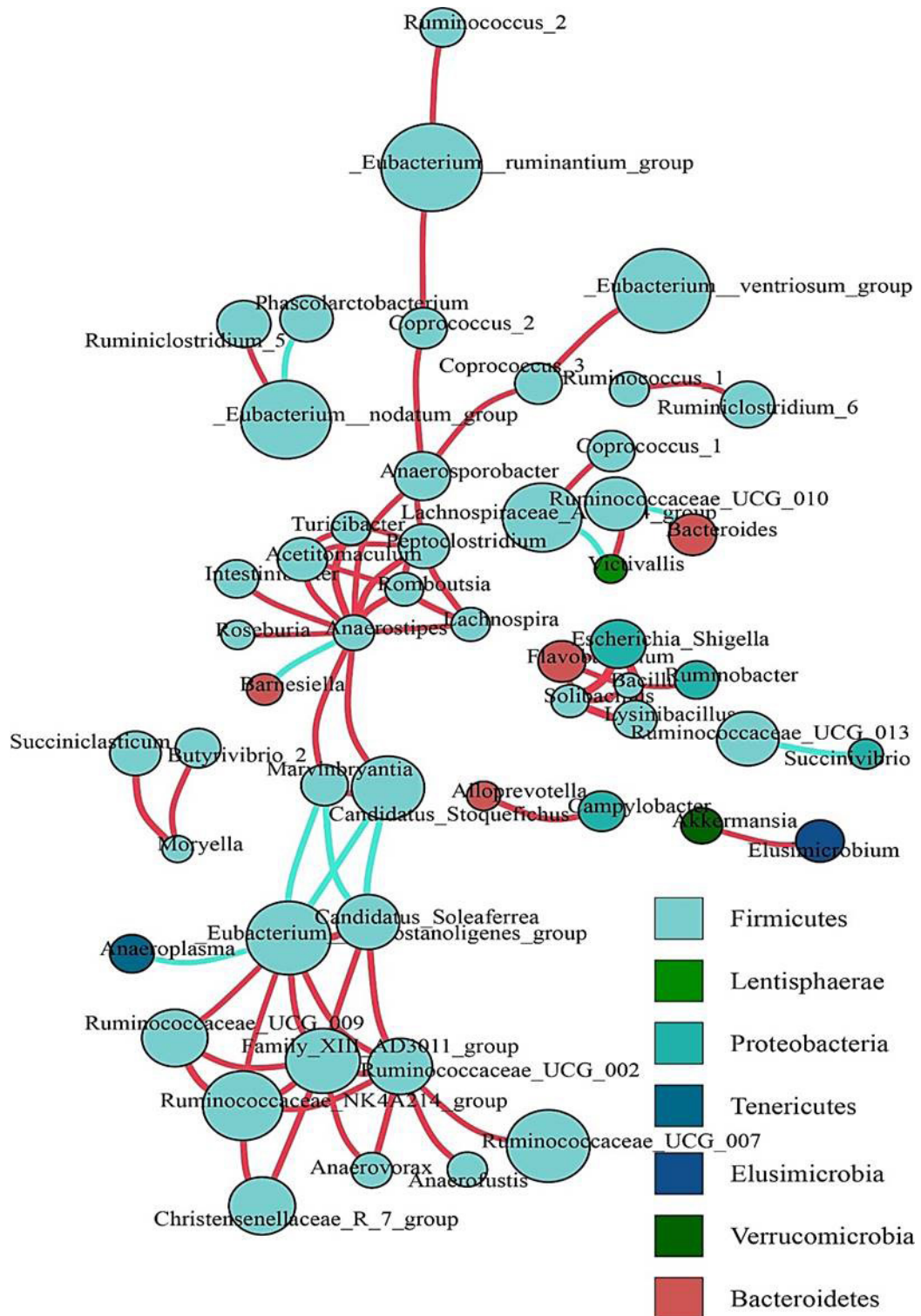
Microbiome No.	Animal ID	Sampling date	Gender	Sample ID	Treatment
1	1	22-Aug	Male	ZTD16126372	T1
2	A	22-Aug	Female	ZTD16111529	TCA
3	B	22-Aug	Male	ZTD16111530	TCB
4	C	22-Aug	Male	ZTD16111531	TCC
5	D	22-Aug	Female	ZTD16111532	TCD
6	E	22-Aug	Male	ZTD16111533	TCE
7	F	22-Aug	Male	ZTD16111534	TCF
8	G	22-Aug	Male	ZTD16111535	TYG
9	H	22-Aug	Female	ZTD16111536	TCH
10	I	22-Aug	Male	ZTD16111537	TCI
11	J	22-Aug	Male	ZTD16111538	TCJ
12	K	22-Aug	Female	ZTD16111539	TCK
13	L	22-Aug	Female	ZTD16111540	TYL

* Corresponding author: wws20062127@163.com
0030-9923/2024/0005-2175 \$ 9.00/0



Microbiome No.	Animal ID	Sampling date	Gender	Sample ID	Treatment
14	M	22-Aug	Male	ZTD16111541	TCM
15	N	22-Aug	Male	ZTD16111542	TCN
16	O	22-Aug	Female	ZTD16111543	TCO
17	A	23-Aug	Female	ZTD16111544	TCA
18	B	23-Aug	Male	ZTD16111545	TCB
19	C	23-Aug	Male	ZTD16111546	TCC
20	D	23-Aug	Female	ZTD16111547	TCD
21	E	23-Aug	Male	ZTD16111548	TCE
22	F	23-Aug	Male	ZTD16111549	TCF
23	G	23-Aug	Male	ZTD16111550	TYG
24	H	23-Aug	Female	ZTD16111551	TCH
25	I	23-Aug	Male	ZTD16111552	TCI
26	J	23-Aug	Male	ZTD16111553	TCJ
27	K	23-Aug	Female	ZTD16111554	TCK
28	L	23-Aug	Female	ZTD16111555	TYL
29	M	23-Aug	Male	ZTD16111556	TCM
30	N	23-Aug	Male	ZTD16111557	TCN
31	O	23-Aug	Female	ZTD16111558	TCO
32	A	24-Aug	Female	ZTD16111559	TCA
33	B	24-Aug	Male	ZTD16111560	TCB
34	C	24-Aug	Male	ZTD16111561	TCC
35	D	24-Aug	Female	ZTD16111562	TCD
36	E	24-Aug	Male	ZTD16111563	TCE
37	F	24-Aug	Male	ZTD16111564	TCF
38	G	24-Aug	Male	ZTD16111565	TYG
39	H	24-Aug	Female	ZTD16111566	TCH
40	I	24-Aug	Male	ZTD16111567	TCI
41	J	24-Aug	Male	ZTD16111568	TCJ
42	L	24-Aug	Female	ZTD16111569	TYL
43	M	24-Aug	Male	ZTD16111570	TCM
44	N	24-Aug	Male	ZTD16111571	TCN
45	O	24-Aug	Female	ZTD16111572	TCO

Z3, adult; Z2, sub-adults; Z1, infant; TC, adult; TY, sub-adults; T1, infant.



Supplementary Fig. S1. Network analysis. Network was used to explore co-occurrence patterns of bacterial taxa. A connection stands for a strong (Spearman's $P > 0.6$) and significant ($P < 0.01$) correlation. The size of each node is proportional to the relative abundance at genus level; the thickness of each connection between two nodes (edge) is proportional to the value of Spearman's correlation coefficients; the color of edge meant positive (red) and negative (blue) relation.